

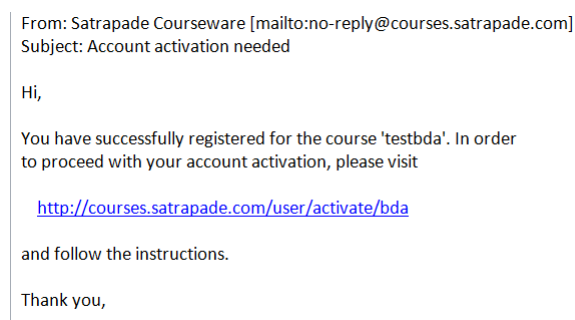
Instructions

Before proceeding please note the following:

- In some of the steps below you may be prompted with security warnings from your browser. Please ignore them and proceed in all the steps.
- Please follow the instructions attached from a *computer* (NOT from your mobile device!)
- The name of the course will replace tags such as "bdatest" or "bda" or "bdas" below. The name of the course is indicated in the email you received from "Satrapade Courseware" (typically "bda" or "bdas").

How to set up your server account:

1. From your computer, please click on the link in the email you received from “Satrapade Courseware” (see [Figure 1.1](#)). This will take you to a page that says “Welcome to the Satrapade Analytics E-Class platform!” and click on the link you will see there.



From: Satrapade Courseware [mailto:no-reply@courses.satrapade.com]
Subject: Account activation needed

Hi,

You have successfully registered for the course 'testbda'. In order to proceed with your account activation, please visit

<http://courses.satrapade.com/user/activate/bda>

and follow the instructions.

Thank you,

Fig. 1.1 Example e-mail from Satrapade Courseware.

2. On the page you are now directed to (your github account) click on the green box “Allow access” at the bottom of the page WITHOUT altering any of the permissions, see [Figure 1.2](#). (This is required so that we can share material via github. You will also receive an automatic confirmation email from GitHub which you should ignore).

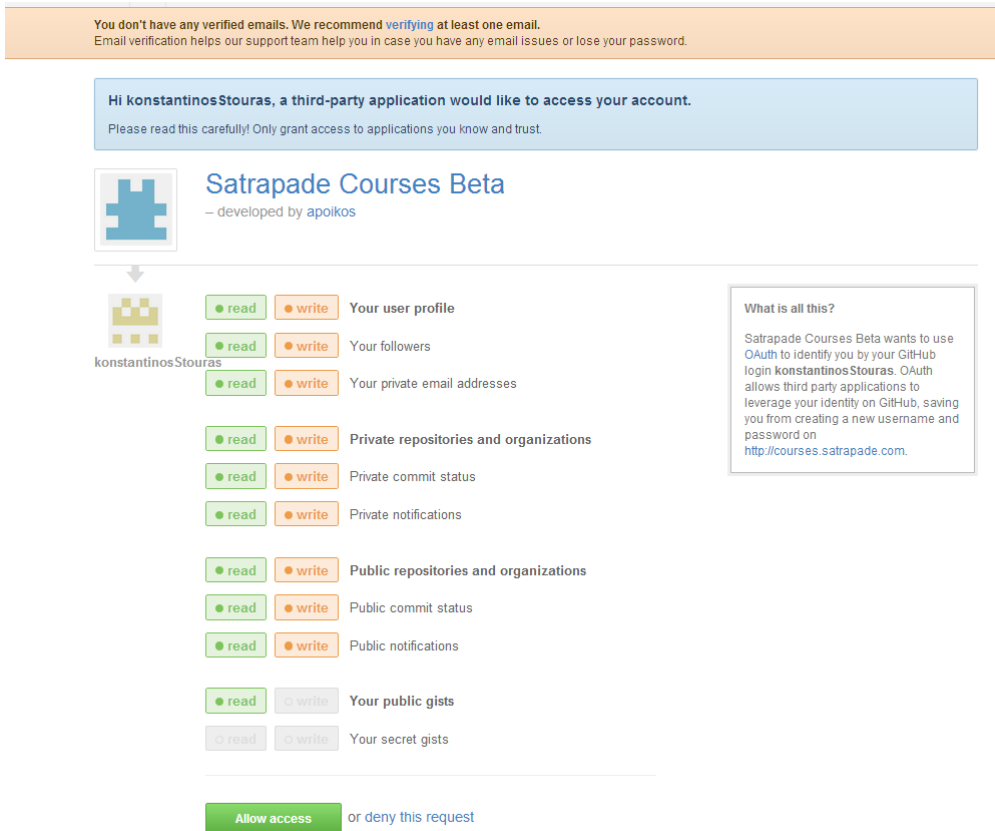


Fig. 1.2 Satrapade allow access screen.

3. Please enter your GITHUB password, when prompted. You will be directed to the next step (a new page) automatically.
4. You are now on the page http://courses.satrapade.com/user/set_password. Please note the USERNAME provided and choose an “individual server password”, as in [Figure 1.3](#). (You can even choose the same as your GITHUB password!).

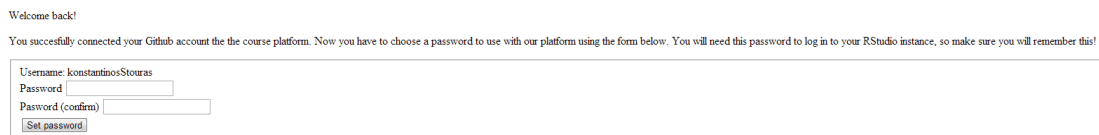


Fig. 1.3 Choosing your individual server password.

5. You will then be taken to <http://courses.satrapade.com/user/initialize>. Just wait a bit for a link to appear in the end of the text, as in [Figure 1.4](#). Note again your USERNAME from **Step 4**, exactly as it appears in the text (case-sensitive!), see [Figure 1.5](#). Click on this link “login to your RStudio instance” and *ignore* the

security warning (click “Proceed anyway”, as in Figure 1.6. The *exact* security alert may depend on your browser).

Current status:

Your password is set. While we are waiting for your account to initialize, please take some time and note the following:

- Your RStudio instance will be accessible at <https://konstantinosStouras.bda.satrapade.com>.
- Use your Github username (**konstantinosStouras**) and the password you just set to log in to RStudio.
- The course material will already be present in your working directory.

A copy of the above will be sent to your e-mail address when the activation completes.

Please wait, your instance is still initializing

Fig. 1.4 Step 5, waiting step.

Current status:

Your password is set. While we are waiting for your account to initialize, please take some time and note the following:

- Your RStudio instance will be accessible at <https://konstantinosStouras.bda.satrapade.com>.
- Use your Github username (**konstantinosStouras**) and the password you just set to log in to RStudio.
- The course material will already be present in your working directory.

A copy of the above will be sent to your e-mail address when the activation completes.

We're done! You can now proceed to [login to your RStudio instance](#).

Fig. 1.5 Step 5.

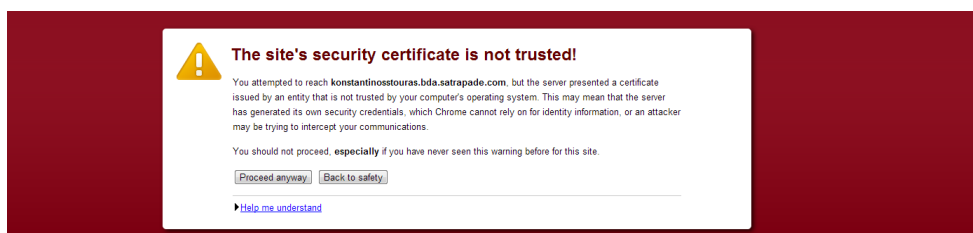


Fig. 1.6 Example of a security alert to be ignored, at Step 5. Note that this will depend on your browser, and this is an instance from using Google Chrome.

6. Login to your individual server (using the USERNAME and your “individual server password” from Step 4). See Figure 1.7 for example.

Current status:

Your password is set. While we are waiting for your account to initialize, please take some time and note the following:

- Your RStudio instance will be accessible at <https://konstantinosStouras.bda.satrapade.com>.
- Use your Github username (**konstantinosStouras**) and the password you just set to log in to RStudio.
- The course material will already be present in your working directory.

A copy of the above will be sent to your e-mail address when the activation completes.

We're done! You can now proceed to [login to your RStudio instance](#).

Fig. 1.7 Step 6.

7. You made it! You are now logged in your server and you should see the Rstudio as in the picture below.

Here are the first things you can do on your server:

1. On the bottom right panel, click on the INSEADjan2014 directory (see Figure 1.8).

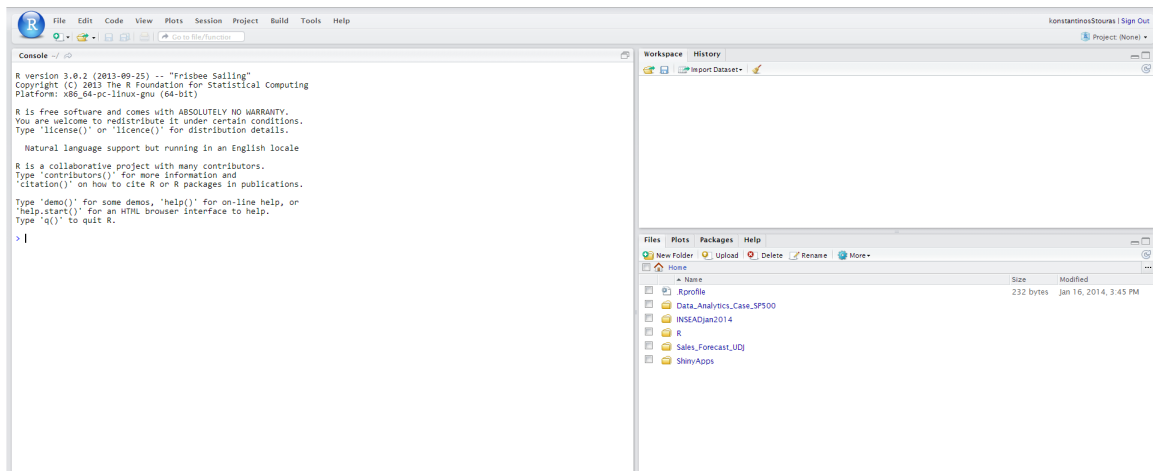


Fig. 1.8 Running R from Amazon Server.

2. Once in that directory, please click on the INSEADjan2014.Rproj file. (Click YES when asked to open the project)

3. Once INSEADjan2014 project is open, you should see a Git tab appearing on the upper right panel (see Figure 1.9). (Your server is now connected with your github account and all the course material is loaded)

4. The files in the bottom right corner have *all* the source files of the course website.

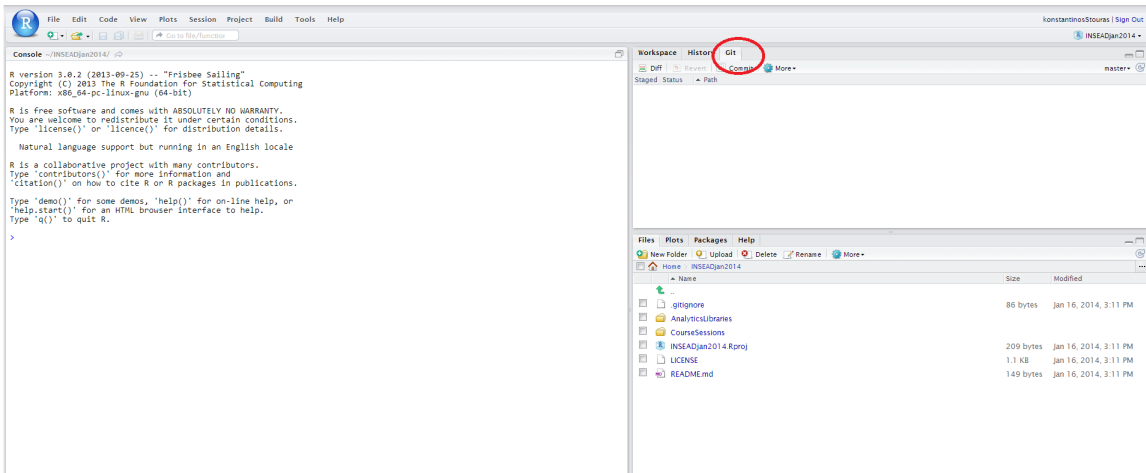


Fig. 1.9 Git tab example.

Your projects will be available through this server for anyone you would like to share them with. For example, you can open the following URL replacing “YOUR_USERNAME” with yours:

`YOUR_USERNAME.bdas.satrapade.com/shiny/YOUR_USERNAME/Sales_Forecast_UDJ/` which should be the “A UDJ Regression App” publicly available through your individual server. *Try it!*